



TO LET - Industrial / Workshop Units 1,234 - 2,782 Sq Ft (114.64 - 258.45 Sq M)

- Established Commercial Location
- 500m from Junction 29a M1
- Suitable for a variety of uses

TO LET - Industrial / Workshop Units

1,234 - 2,782 Sq Ft (114.64 - 258.45 Sq M)

Location

M1 Commerce Park at Markham Vale, Chesterfield, Derbyshire is an excellently located business park which benefits from excellent motorway links being located adjacent to J29A of the M1. The site is less than 500m from Junction 29a of the M1 and provides visibility running parallel along the M1 Motorway stretch.

Description

M1 Commerce Park is strategically located at Junction 29A of the M1, offering a secure, self-contained industrial estate spanning 26 acres. The site features over 60 industrial units totaling 230,000 sq. ft, along with storage yards in various sizes.

Unit 58a & 59 offer industrial/ workshop space suitable for a variety of uses.

There are car parking spaces available with the units. Precise number to be agreed.

Accommodation

DESCRIPTION	SQ FT	SQ M
Unit 58a	1,548	143.81
Unit 59	1,234	114.64
TOTAL	2,782 SQ FT	258.45 SQ M

Terms

New FRI lease terms to be agreed.

Unit 58a - 1,548 Sq Ft - £15,480 + VAT per annum

Unit 59 - 1,234 Sq Ft - £12,340 + VAT per annum

Units are neighbouring and can be taken individually or combined.

VAT

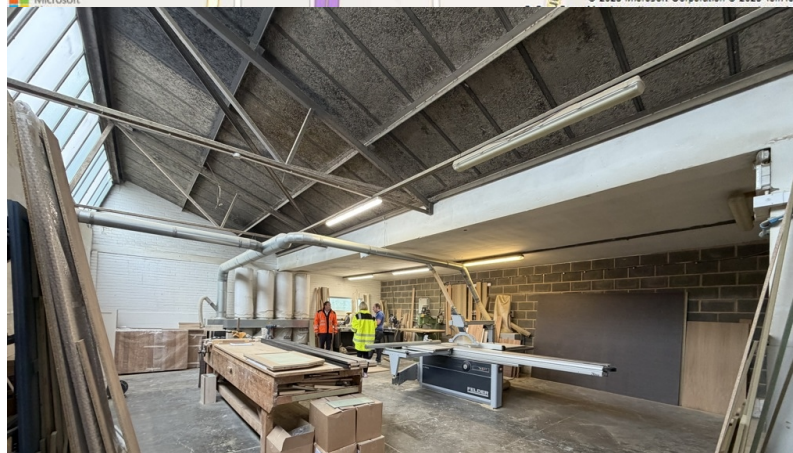
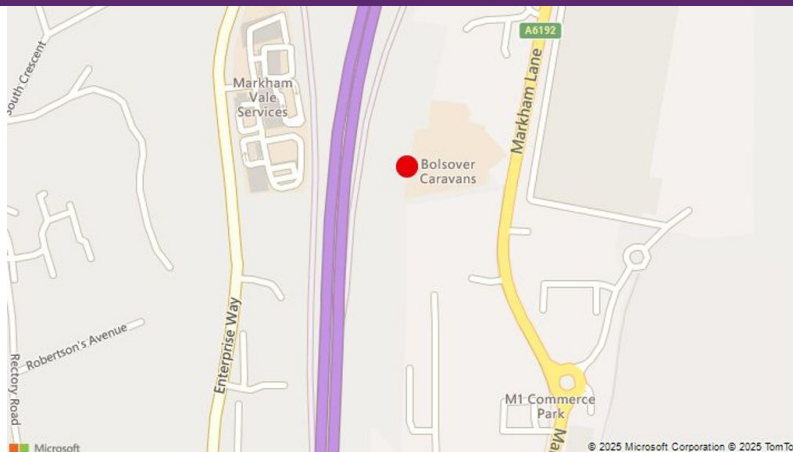
All figures are quoted exclusive of VAT at the prevailing rate.

Rateable Value

Rateable Value available upon request

EPC Rating

EPC Available upon request



Anti-Money Laundering (AML)

To comply with AML Regulations, identification checks and confirmation of source of funding is required from any purchaser or lessee.

Legal Costs

Each party to bare their own legal costs in the transaction.

Further Information

For further information please contact the sole agents CPP

Will Rowe

T: 0114 2738857

M: 07709 281 377

E: will@cpp.uk

Mr Ed Norris MRICS

T: 0114 270 9160

M: 07711 319 339

E: ed@cpp.uk

June 2026



Important Notice 1. Particulars: These particulars are not an offer or contract, nor part of one. You should not rely on statements by Commercial Property Partners (CPP) in the particulars or by word of mouth or in writing ("information") as being factually accurate about the property, its condition or its value. Neither CPP nor any other agent has any authority to make any representations about the property, and accordingly any information given is entirely without responsibility on the part of the agents, seller(s) or lessor(s). 2. Photos etc: The photographs show only certain parts of the property as they appeared at the time they were taken. Areas, measurements and distances given are approximate only. 3. Regulations etc: Any reference to alterations to, or use of, any part of the property does not mean that any necessary planning, building regulations or other has been obtained. A buyer or lessee must find out by inspection or in other ways that these matters have been properly dealt with and that all information is correct.